

CREATIVE TECHNOLOGY

Broad Institute Giving

The decoding of the human genome sparked a revolution in how we understand human health and disease

Transformative science usually stems from truly original—and risky—ideas.

OVERVIEW

The Challenge

Transformative science usually stems from truly original—and risky—ideas. But researchers often face serious hurdles in funding their most ambitious projects precisely because of their risky nature. Thanks to the generosity and support of our philanthropic partners, the Broad is able to empower researchers to pursue their most ambitious projects.

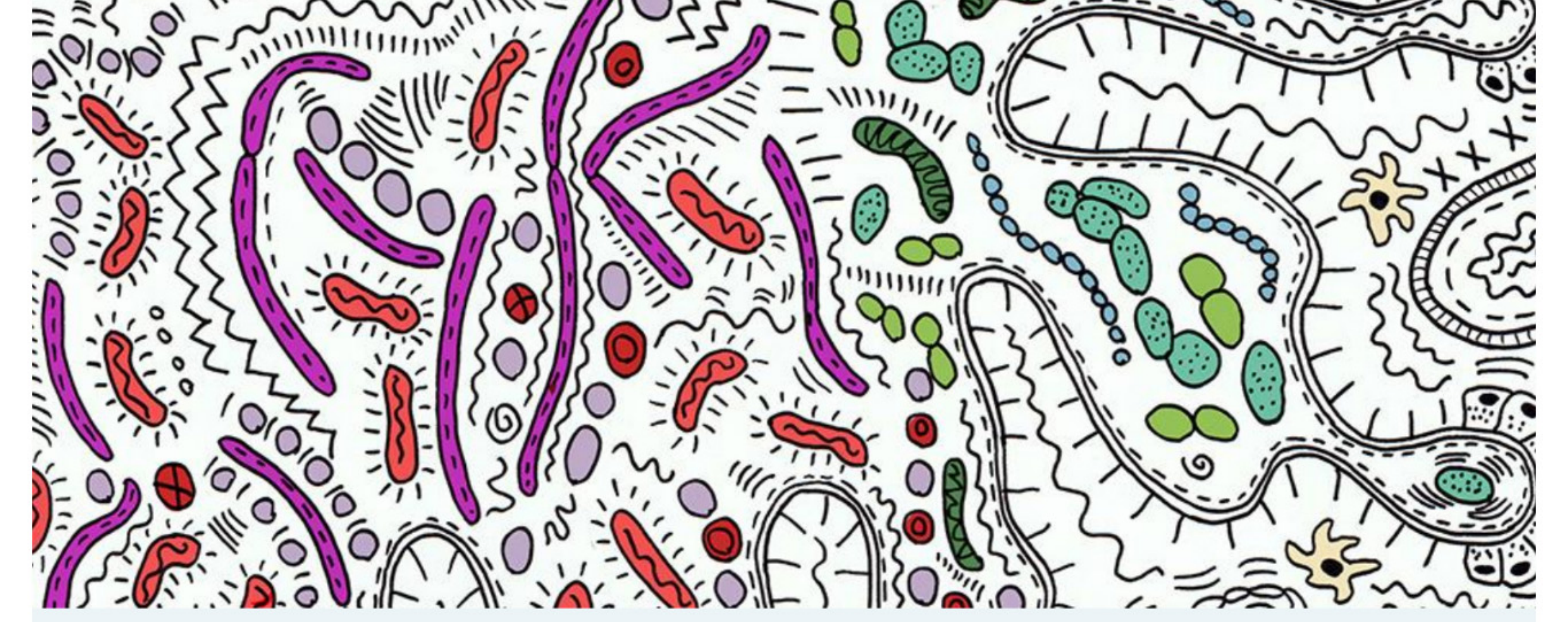
We worked with Broad Institute's philanthropic team to migrate site from Drupal 7 to Drupal 8 and set the new site on Acquia platform.



PROJECT

The Solution

WDB engineering and project management teams worked closely with the Broad's team to scope new features and functionality and address various shortcomings to improve user experience and wayfinding.



Studying the infant microbiome could provide clues to a prevalent protein allergy

A MILK-ALLERGY MYSTERY

[Learn more](#)



MISSION

PRIORITIES

DONOR IMPACT

Transformative science requires visionary philanthropy. Our philanthropic partners include individuals, corporations, and foundations, who give in a variety of ways.

[Read More](#)

BROADIGNITE

FASI



BROAD INSTITUTE

CONTACT US

MISSION PRIORITIES IMPACT

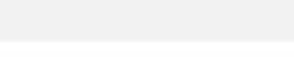
Revolutionizing Biomedicine

WAYS TO GIVE

BROADIGNITE



Partner with us to seed the next generation of scientific visionaries.



CONNECT WITH BROADIGNITE

FACEBOOK



TWITTER



EMAIL



MEET OUR RESEARCHERS

IN THE NEWS

LEARN MORE

DONATE NOW



BROAD INSTITUTE

CONTACT US