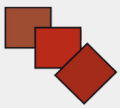


EHC Gestión e Ingeniería Turns Complex Workflows into Efficient Processes with ZWCAD



EHC GESTIÓN e INGENIERÍA

INDUSTRY

Comprehensive Engineering for Infrastructure, Energy, and Commercial Sectors

PRODUCTS

Engineering solutions including design, installations, and certification services for a wide range of sectors

WEBSITE

<https://ehcgestioning.com/>

❓ CHALLENGES

- Needed a reliable CAD solution that could handle the increasing demands of 2D drawings and facility calculations
- Required a flexible tool to manage the growing complexity of their projects across various sectors
- Sought a budget-friendly solution that would streamline workflows and improve productivity

💡 SOLUTION

ZWCAD

✅ RESULTS

- Increased efficiency by speeding up 2D design and facility calculations, enabling faster project completion
- Enhanced accuracy and minimized errors through convenient features, such as versatile trim modes
- The growing block library streamlines project setup and boosts workflow efficiency

EHC Gestión e Ingeniería, based in Spain, has delivered high-quality engineering solutions for several decades. Specializing in design, installations, and certification services, they've built a reputation for their work across a wide range of sectors, including public infrastructure, energy rehabilitation, and commercial installations.

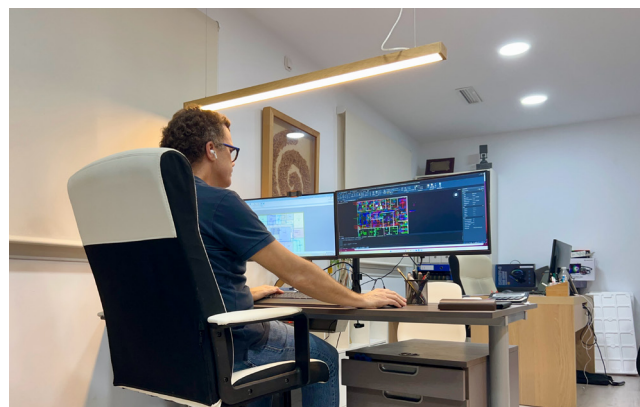
Serving both public and private clients, EHC is trusted to manage and deliver even the most complex engineering projects with precision and reliability. Whether it's designing new buildings or finding innovative ways to improve energy efficiency, they're known for providing solutions that make a tangible difference.

Search for a More Capable CAD Solution

As EHC's projects became more diverse and demanding, they realized their existing CAD software just wasn't cutting it anymore. While AllPlan worked fine for 3D designs, it struggled with the increasing need for 2D drawings and facility calculations. The team was handling bigger, more complex projects, and it was clear they needed a tool that could help them keep up—something that would make their work easier and help them work smarter.

In 2010, EHC decided to give ZWCAD a try. Initially

drawn to its affordable pricing, they quickly discovered that ZWCAD offered far more than just budget-friendly benefits. As Eulalio Huertos, Director of EHC, explains, "We chose ZWCAD because of the price, and we stayed because of its performance." The combination of stability and performance made ZWCAD a perfect fit for EHC, allowing them to confidently handle an increasingly diverse project portfolio.



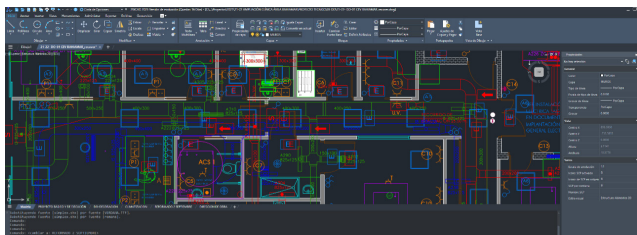
Ayaka Okuda Using ZW3D for Mold Design

Huertos also highlights the efficiency of the support provided by MP Software Técnico in resolving the difficulties that have arisen for him and his team. "All the doubts that have arisen on a day-to-day basis have been quickly resolved by support," he says.

Affordable at First, Indispensable Ever Since

Since using ZWCAD, EHC has found that the software allows them to work faster and more efficiently. Tasks like 2D design and facility calculations that once took hours are now completed much quicker, giving the team more time to focus on complex design work. ZWCAD's simple interface has helped the team streamline their workflows and avoid getting bogged down in unnecessary details. As Huertos explains, "ZWCAD is simpler and more stable than other alternatives I have tried".

Precision is crucial in engineering, and ZWCAD plays a significant role in ensuring accurate designs. Its versatile trim modes and detail-oriented features enable EHC to minimize errors and streamline their workflow. As Huertos highlights, "The easy-to-use trim, especially in the latest version, has always made our work easier." With ZWCAD, the team can rely on advanced tools that enhance precision and reduce the need for rework or delays.



Screenshot of one of EHC Gestión e Ingeniería's projects

What's more, ZWCAD plays a key role in helping EHC digitize their processes and improve efficiency as their project portfolio expands. With each completed project, EHC builds a growing collection of reusable blocks, streamlining future installations and reducing repetitive tasks. "With each project, we are generating a larger block library. It helps us a lot afterward. It allows us to reuse them in other installations," says Huertos.

A Steady Solution for EHC's Growing Project Demands

"It has never failed us in our projects," says Eulalio Huertos, and this has been true from the very start of using ZWCAD. Since adopting the software, EHC has consistently relied on it to handle the complexities of

their engineering projects, helping the team stay on track and meet deadlines, whether for energy rehabilitation or public building renovations.

In recent years, ZWCAD has been used for various projects, including the Ávila Pet Shop in LUZ Shopping Mall in Cádiz. ZWCAD was mainly used for 2D design, allowing the team to complete the project on time, and meet all the technical requirements.



Ávila Pet Shop in LUZ Shopping Mall in Cádiz

As EHC continues to grow and take on new projects, they recognize that ZWCAD will remain an important part of their workflow. In the future, the team is focused on continuing to use ZWCAD to improve efficiency and meet the evolving demands of the industry. With the ongoing support of ZWCAD, EHC is able to maintain their standards of quality, while keeping projects on track and moving forward at a steady pace.

ZWSOFT

ZWSOFT has been delivering reliable all-in-one CAX solutions since 1998. With over 20 years of experience, our products have been chosen and trusted by over 1.4 million customers in more than 90 countries worldwide.

32/F, Pearl River Tower, Guangzhou, China
+86-20-38289780
sales@zwsoft.com
www.zwsoft.com