



Introduction:

THE STAKES IN DIGITAL BANKING SECURITY

dotConnect, a leading provider of Digital Customer Engagement Platforms, delivers SaaS solutions tailored for the banking sector. Working with medium and large banks across the UK and Europe, dotConnect's Azure-hosted platform enables essential services, from customer onboarding to secure communications and account servicing. In the world of digital banking, where security and trust are paramount, dotConnect faced the critical task of safeguarding sensitive financial data and meeting rigorous regulatory standards.

As they expanded their client base, dotConnect recognized that data encryption and continuous compliance monitoring were essential. They wanted assurance that their data was fully encrypted at all times and sought a solution that could help them track compliance across multiple regulatory frameworks. Native Azure tools provided limited support, but dotConnect needed a far more robust solution that offered comprehensive security and compliance oversight. They required a partner who could provide real-time visibility, proactive threat detection, and seamless compliance tracking across regions.



CASE STUDY

How dotConnect Fortified Digital Banking Security with Banyan Cloud

Problem:

LIMITED VISIBILITY AND COMPLIANCE PRESSURE

Despite its expertise in digital banking, dotConnect faced serious challenges in maintaining its security and compliance obligations:

- **Data Encryption Monitoring:** With sensitive financial information stored in their Azure infrastructure, dotConnect needed a way to continuously monitor data encryption status. The lack of visibility in Azure's native tools left them unsure if all data was fully encrypted, creating potential exposure risks.
- **MultiRegulatory Compliance:** Serving banking clients across multiple jurisdictions meant that dotConnect had to meet various compliance requirements including GDPR and ISO27001. This required continuous monitoring, documentation, and auditing—a significant challenge without a dedicated security platform.
- **Threat Visibility and Proactive Security:** dotConnect wanted to stay ahead of potential cyber threats. However, limited visibility in their current setup made it difficult to anticipate or prevent emerging risks. They needed a proactive solution that could detect vulnerabilities before they became liabilities.

dotConnect's leadership team knew they needed a trusted, flexible solution to fill these gaps—something beyond the capabilities of their native tools. They needed a partner that could provide continuous, comprehensive monitoring and streamline their approach to both security and compliance.



Solution:

BANYAN CLOUD BRINGS CONTINUOUS MONITORING, FLEXIBILITY, AND PEACE OF MIND

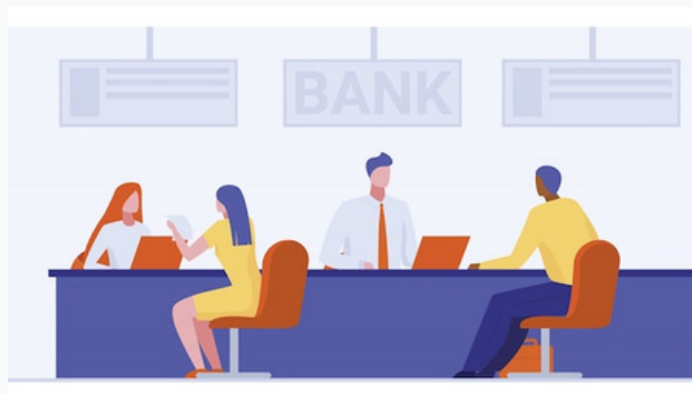
When dotConnect partnered with Banyan Cloud, they finally found the comprehensive support they'd been searching for. Banyan Cloud's agentless, AI-powered Cyber Security & Governance SaaS (CNAPP) platform offered everything dotConnect needed, from continuous data encryption monitoring to real-time compliance tracking across regulatory frameworks.

Seamless Onboarding and Immediate Impact: Banyan Cloud's platform integrated effortlessly with dotConnect's Azure environment. Within minutes, dotConnect had real-time insights into their security posture and gained the continuous visibility they had been missing.

Key Solutions Implemented:

- **Continuous Data Encryption Monitoring:** Banyan Cloud's platform provided dotConnect with real-time visibility into data encryption across their Azure infrastructure. With this capability, dotConnect could ensure that all sensitive information remained encrypted and protected, meeting the high standards expected by their banking clients.
- **Real-time Compliance Check and Remediation:** Banyan Cloud offered automated compliance tracking and remediation of all thesecurity controls, eliminating the need for manual checks and reducing the risk of non-compliance. This feature allowed dotConnect to be audit-ready at any time and stay in compliance with GDPR and other critical standards across Europe.
- **Proactive Threat Detection:** Banyan Cloud's AI-driven capabilities enabled dotConnect to identify potential threats and vulnerabilities before they could impact their systems. This proactive approach allowed dotConnect to mitigate risks swiftly and maintain a resilient security posture.
- **Flexible, Tailored Insights:** Banyan Cloud's adaptable platform was built to support dotConnect's unique operational needs, providing a level of flexibility that their previous tools couldn't match. dotConnect could now manage security and compliance requirements with ease, regardless of regional differences or evolving regulatory demands.

Banyan Cloud didn't just surface issues—it provided actionable insights and clear steps for remediation, empowering dotConnect's team to address security concerns effectively and confidently.





Results:

TRUST, TRANSPARENCY, AND A STRENGTHENED DIGITAL BANKING PLATFORM

With Banyan Cloud's continuous monitoring and real-time insights, dotConnect achieved an impressive transformation in their security posture. They no longer had to worry about encryption gaps or blind spots in regulatory compliance-Banyan Cloud offered them full control and peace of mind.

Key Outcomes:

- **Enhanced Security and Data Protection:** Continuous data encryption monitoring ensured that dotConnect's sensitive information remained secure, building client trust in their ability to protect valuable banking data.
- **Reliable, Real-Time Compliance:** dotConnect's compliance obligations became significantly more manageable, with Banyan Cloud's automated tracking across multiple standards. This readiness improved their audit efficiency and minimized the operational burden of staying compliant.
- **Improved Client Trust and Reputation:** With Banyan Cloud's robust platform, dotConnect could assure their banking clients that their data security and compliance were well under control, enhancing their credibility and reliability in the financial services market.
- **Sustainable Security Practices:** dotConnect's team, now equipped with Banyan Cloud's proactive monitoring and insights, could maintain an ongoing secure posture without significant additional resources. This empowered them to focus on delivering exceptional service to their clients.

Conclusion:

A PARTNERSHIP FOR RESILIENCE AND TRUST

For dotConnect, partnering with Banyan Cloud was a turning point in their journey towards resilient, secure, and compliant digital banking solutions. Banyan Cloud's continuous monitoring, flexible compliance support, and real-time encryption visibility addressed dotConnect's critical needs, allowing them to protect client data with confidence and transparency.

With Banyan Cloud, dotConnect didn't just gain a vendor; they gained a partner dedicated to building resilience and trust. Banyan Cloud illuminated hidden vulnerabilities, provided invaluable insights, and helped dotConnect navigate the complex landscape of digital banking security and compliance. As dotConnect looks to the future, they are well-prepared to serve their clients with the assurance that their security and compliance standards are in expert hands-no longer a daunting task, but a solid foundation on which to build enduring client trust and success in digital banking.



Banyan Cloud's solution has transformed our approach to cybersecurity and compliance. Securing our Azure-hosted infrastructure and meeting regulatory standards across banking clients is no longer a daunting task. The onboarding was seamless, and we received immediate, actionable insights that enhanced our security posture. Banyan Cloud has been a game-changer for us."

Mohamed Gamil,
CEO of dotConnect