



BWBR & Aldevron

From its inception as a two-person startup manufacturing plasmid DNA to currently navigating the build out of it's 14-acre campus, Aldevron has relied on SketchUp for many of its architectural and design projects.

Full case study [here](#).

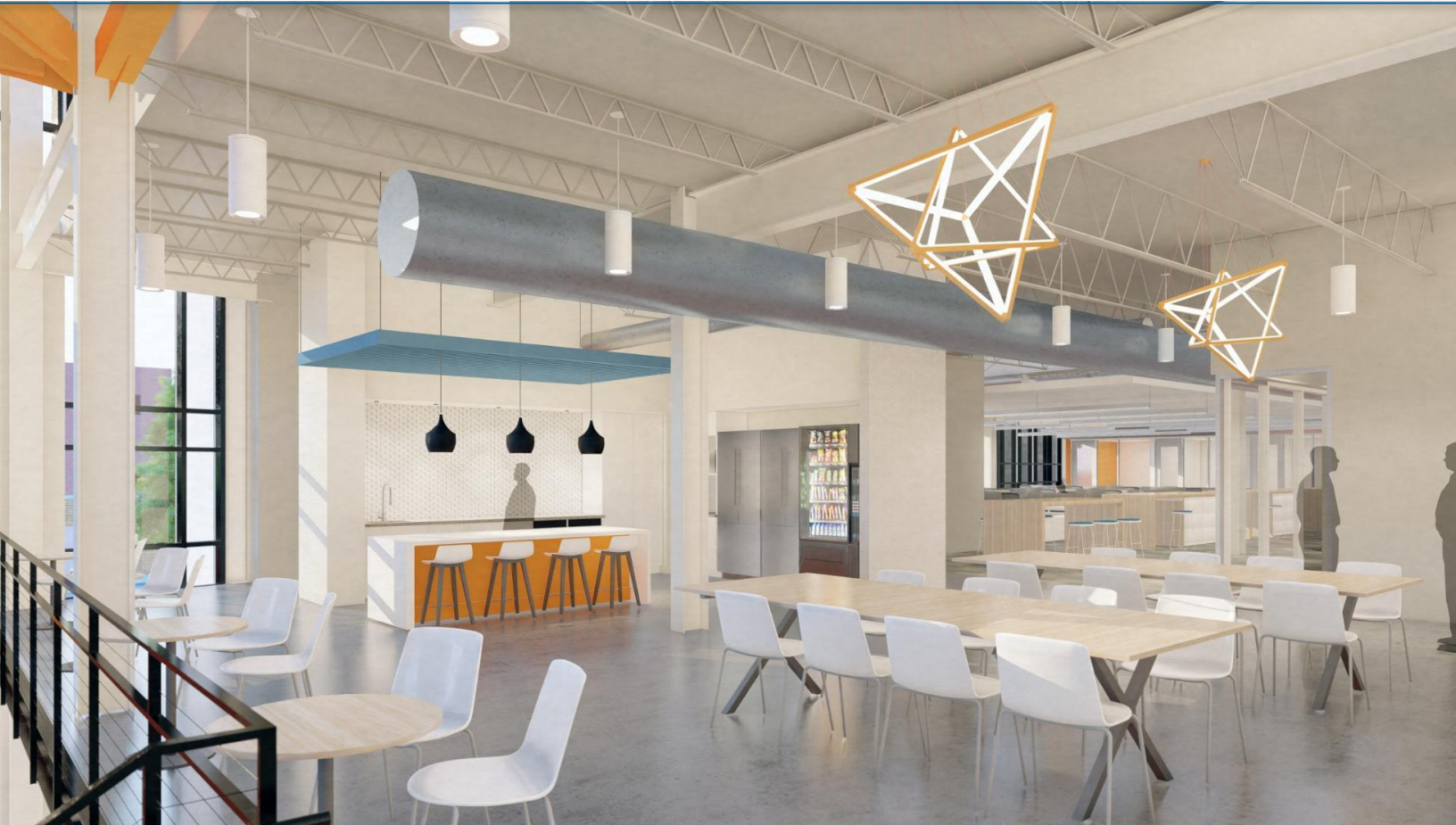
www.sketchup.com

Location: Fargo, North Dakota

Project type: Live-work

Project area: 14 Acres

Status: Completed



Aldevron Campus

Collaborating in SketchUp to deliver a 14-Acre Campus for biological science firm, Aldevron

“

SketchUp helped us swiftly prototype spaces within the building and iterate on the fly. From the start, being able to measure accurately and visualize the space in 3D was invaluable. This enabled us to get our internal clients on board with any changes.

Matt Chambers | Lead Strategist at Aldevron
Chris Fischer | Architect at BWBR

3D Warehouse provides so much value as it saves us a ton of time modeling things like furniture and lighting from scratch.

Our team has always used SketchUp as our primary design tool thanks to the flexibility, ease, and speed it affords us. We've tried other software but found them too cumbersome — especially for conceptual design.