

# MLP CONSULTING IS DESIGNING THE FUTURE WITH MSUITE BIM

A CASE STUDY



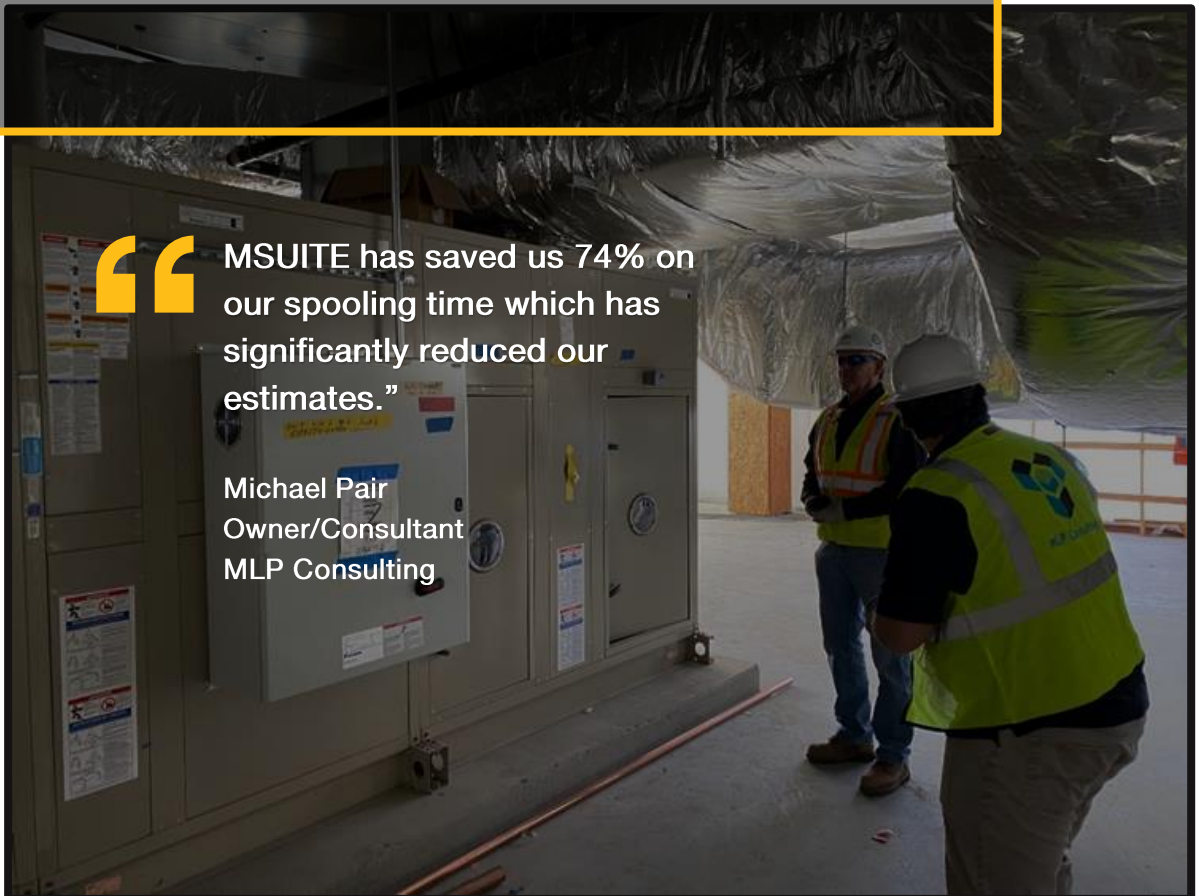
MLP CONSULTING LLC  
FIELD EXPERIENCED BIM

Innovation Helping Build a Better  
Tomorrow.



MSUITE has saved us 74% on  
our spooling time which has  
significantly reduced our  
estimates.”

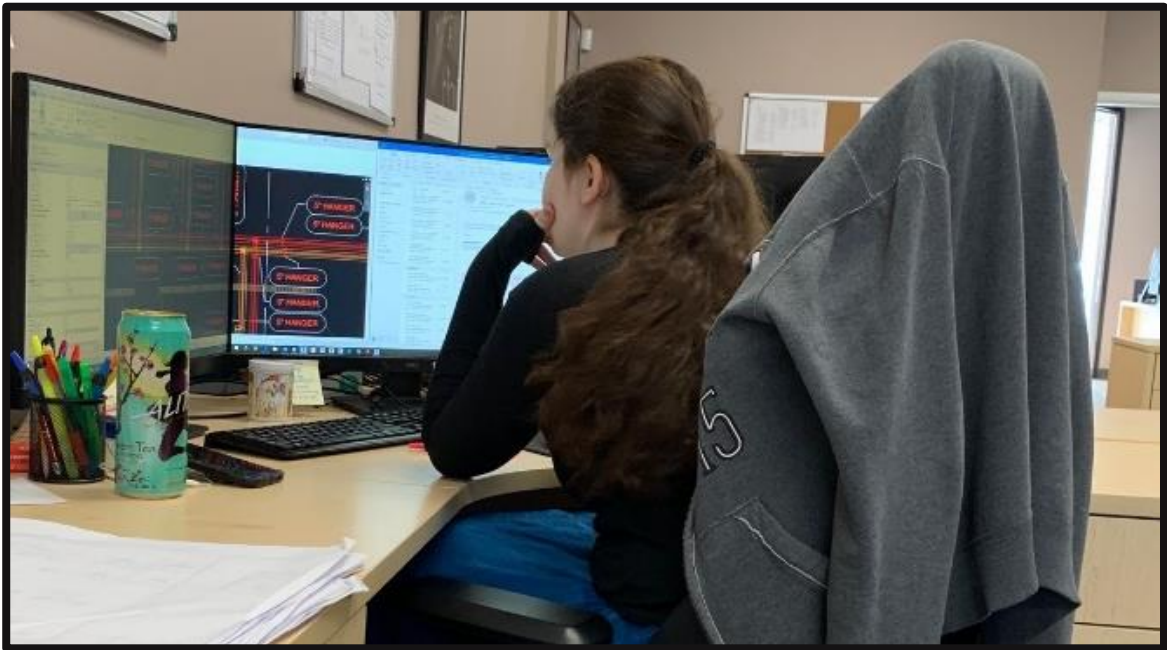
Michael Pair  
Owner/Consultant  
MLP Consulting



## INTRODUCTION

MLP Consulting, headquartered in Arizona with additional offices in Wisconsin, Florida, and Michigan, is renowned for its dedication to delivering exemplary design services in the building industry. They offer a comprehensive range of services, including 3D MEP modeling, fabrication drawings, BIM coordination, CAD management, spool drawings, HVAC sheet metal BIM, mechanical piping BIM, plumbing BIM, electrical BIM, consulting, and laser scanning.

MLP Consulting works on a variety of large commercial projects such as hospitals, battery plants, and industrial facilities. MLP Consulting predominantly serves Mechanical, Plumbing, and Electrical contractors, providing indispensable modeling coordination, hangers, and spools. A key strength of the company is its ability to convert designs into constructible and fabricable models.



## A COMMITMENT TO ADVANCED TECHNOLOGY

With over three decades of experience in both field construction and design drafting, MLP Consulting utilizes state-of-the-art technology including Revit, AutoCAD MEP, Fabrication CADmep, East Coast CAD, and Navisworks Manage. The firm is led by Michael Pair, an expert with multiple Autodesk Certifications. The entire team is committed to staying updated with the latest industry trends and technological advancements, ensuring that they are always at the cutting edge of the construction and design sectors.

## WHY MLP CONSULTING SWITCHED TO MSUITE BIM

After several years of working with one of MSUITE's competitors and dealing with unmet feature requests, Michael Pair and the team decided it was time for a change. MLP Consulting switched to MSUITE BIM and has been highly impressed with its seamless integration with Revit as well as many other features.

One key feature that stands out is the **"ISOMETRIC SPOOL VIEW"** feature for Fab Shops to use to build the pipe runs. Everything that is welded together in the shop is on a single drawing. This tool has been particularly beneficial for their business, which involves detailed project planning and execution tailored to client-specific requirements.

## FEATURES BUILT FOR SPEED & ACCURACY

The **"SELECT ALL"** tool in MSUITE BIM, used alongside the Data Mapper feature, has significantly sped up their processes. It has greatly enhanced their ability to build schedules, create BOMs, and perform job takeoffs, surpassing the capabilities of Autodesk Revit and enabling MLP Consulting to achieve more efficient and effective results.

Another key feature that MLP Consulting uses to get more work done enables them to create spools once. The **"AUTO SPOOL"** quickly assembles components 10x faster than the competition using construction logic and project parameters, so that what is fabricated in the shop is suited for the field.

## MSUITE BIM OFFERS DESIGN AUTOMATION

MSUITE BIM offers design automation for MEP professionals, leveraging both your industry experience and ours. Its rule-based automation enables quick fabrication spool and sheet creation, hanger placement, point layout, shop drawings, and more. The Auto Spool feature rapidly creates assemblies using construction logic and project parameters for compatibility between shop fabrication and field requirements. DIY Spool Sheets automate the placement of views, dimensions, tags, and more, reducing detailing time. Whether placing dimensions on 3D views or weld mapping, MSUITE BIM simplifies the process.

The platform also facilitates instant hanger placement and reporting, empowering design teams by removing tedious tasks. It enables efficient point layout and communication with field teams, quickly creating thousands of points and sending them directly to total station equipment. MSUITE BIM integrates seamlessly with existing systems like Autodesk BIM360 Docs and Forge for 2D and 3D workflows, as well as with shop equipment, connecting model information directly to cut tables. This tool is crucial for MLP Consulting, aiding in the delivery of designs and accurate fabrication for commercial and industrial facilities across the United States.

## TRANSFORMATIVE IMPACT OF MSUITE BIM

CEO Michael Pair discussed how the integration of MSUITE BIM has transformed the company's capabilities to support their clients. The introduction of MSUITE has led to a significant reduction in the time required to produce spools, thereby enhancing both the accuracy of estimates and overall operational efficiency.

The Revit plug-in's capability to produce isometric spool drawings was highlighted as a critical factor that influenced MLP Consulting's decision to switch from their previous solution provider to MSUITE, owing to its ongoing evolution and competitive advantages.



Revolutionizing Design Operations



MSUITE has saved us 74% on our spooling time which has significantly reduced our estimates.”

Michael Pair  
Owner/Consultant  
MLP Consulting



## SEAMLESS INTEGRATION & USER ADOPTION

**“THE INDUSTRY IS SHIFTING. TODAY’S FOCUS IS NOT JUST ON WHAT CAN BE FABRICATED, BUT RATHER ON WHAT CANNOT BE!”**

Michael Pair emphasized the seamless integration and ease of training associated with MSUITE. The system's user-friendly nature facilitated a quick adaptation among the staff, maintaining high productivity levels and ensuring continued delivery of high-quality services. "Our experience with MSUITE's customer support team has been exceptional. Their engagement and responsiveness far surpass that of our previous tech partner.

They are consistently attentive to our needs, providing timely solutions and valuable insights that have significantly improved our operations," said Michael.

## INDUSTRY TRENDS AND FUTURE OUTLOOK

The industry is becoming increasingly competitive, with more BIM companies emerging and heightened competition from non-US firms offering significantly lower rates. Despite these pricing challenges, MLP Consulting focuses on delivering superior quality and reliability to sustain long-term client relationships.

### ADVANCEMENTS IN FABRICATION PROCESSES

The industry is shifting towards more extensive use of prefabrication for greater efficiency and precision.

MLP Consulting is capitalizing on this trend by strategically using advanced technologies like MSUITE.

“Outside the U.S., firms offer highly competitive rates, leading some to perceive that cheaper options are better despite potential issues. The construction of multi-trade racks and the use of prefabrication are increasing, particularly in data centers and battery plants,” said Michael.

### LOOKING TOWARDS A FUTURE OF INNOVATION

The focus is shifting from what can be fabricated to what cannot, signaling limitless construction possibilities. MLP Consulting’s proactive adoption of cutting-edge solutions like MSUITE underscores its commitment to maintaining a leadership position in the building industry.

## BUILDING STRONG CLIENT RELATIONSHIPS:



MLP Consulting takes pride in the strong and enduring relationships it has established with its Mechanical, Plumbing, and Electrical customers. The firm continuously seeks opportunities to expand its services and forge new partnerships, enhancing its reputation and outreach. Their comprehensive service offerings can be viewed on their website at MLP Consulting, which details their expertise across a wide range of areas including healthcare, hospitality, residential, retail, and education sectors.

MLP Consulting’s use of MSUITE BIM has not only streamlined their operational efficiency but also helps their customers build better, enabling faster, more precise project execution.

As the company continues to embrace new technologies and expand its capabilities, its dedication to excellence and client satisfaction is unmatched, setting the stage for continued success and innovation.

## MSUITE

MSUITE is cloud-based suite of management software to connect BIM, Fab, and Field Construction Teams.

MSUITE helps you track, manage, and share data throughout the entire life-cycle of a construction project. Stemming from a Mechanical Contractor in Iowa in 2015, MSUITE's products have been a solution to a problem that the construction industry has needed for decades.

## MLP CONSULTING

MLP Consulting leverages over 30 years of design and field expertise to provide top-quality services to building industry professionals. We prioritize client satisfaction by closely collaborating to understand their needs and offer tailored solutions, including 3D modeling, BIM, and software training.

Our team stays current with the latest technology, using Revit, AutoCAD MEP, Fabrication CADmep, East Coast CAD, and Navisworks Manage. Led by Autodesk-certified Michael Pair, we pride ourselves on strong client relationships and look forward to forming new ones.

Visit our website: [MLP Consulting](https://www.mlpconsulting.com)



**MLP CONSULTING LLC**  
FIELD EXPERIENCED BIM

**DEWALT**

**CONSTRUCTION  
TECHNOLOGY**

