

## Multi-Disciplinary Firm Improves Visibility and Project Quality

IMAGINiT Technologies' Clarity Workshare Creates Project Progress Window

**RLF**

### The Organization

Founded in 1935 by celebrated architect, James Gamble Rogers II, RLF has grown from a proprietorship of one to a multi-disciplinary firm of over 130 talented staff. The firm focuses on providing distinctive design solutions for healthcare, educational and cultural projects. With built projects in 27 states and four continents, RLF is recognized as an influential member of the architectural community.

### The Challenge

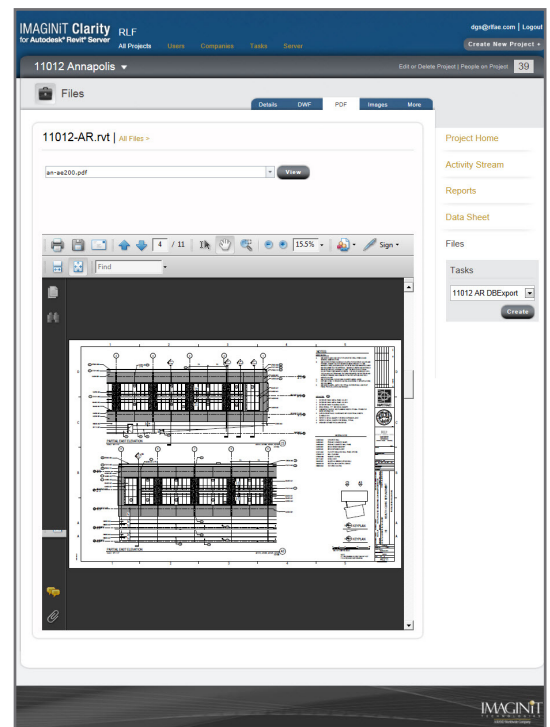
"Most of our projects involve four or five disciplines. We all use Revit models to design our respective area of a project – whether that's architecture, mechanical, electrical or space design. But not everyone in the company has a Revit license or the skills to access different models to check out the work of others and how that work may impact the overall progress," said Keith Holloway, Project Manager with RLF. "In particular, project management would struggle to keep up with progress in all areas using traditional manual reporting methods, which relied on everyone else to keep them up to date."

RLF decided to take a closer look at IMAGINiT's Clarity for Revit Server, for potential use on a particular project. They realized that some of the functionality in Clarity could help them share model data with non-model users in a far more time efficient way. Revit Server ultimately was not chosen for that project, but the team had already come to depend on many of the features Clarity offered.

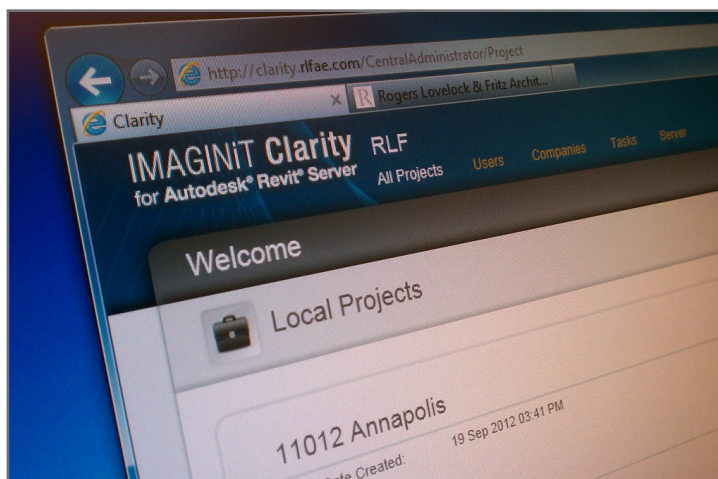
"We fell in love with some of the reporting and automation tools we had tried in Clarity and wanted to keep that functionality without the server capabilities," said Holloway.

**"IMAGINiT Technologies' Clarity Workshare has saved us hours of time creating deliverables for project management and we simply fell in love with the reporting and automation features."**

**— Keith Holloway  
AIA, Project Manager  
RLF**



## The Solution



automated creation of output files – .pdf, .dwf, images, etc. – is a tremendous time saver and allows project managers to track the progress of the models almost in real time.”

RLF uses the task automation functionality to automatically generate .pdf files overnight – every night. “We are running over 40 tasks a night with Clarity Workshare,” said John Spangler, RLF’s Manager of Information Technology. “Those 40 tasks provide near-time progress information on each discipline for six projects in the form of .pdf files showing all the daily updates to our various models.”

The information is made available via the Clarity Web portal, which authorized users can access anytime given password permission. “It’s a very user friendly way to stay connected,” says Holloway.

## Benefits, Results and Real ROI

### Raising the Project Quality Bar

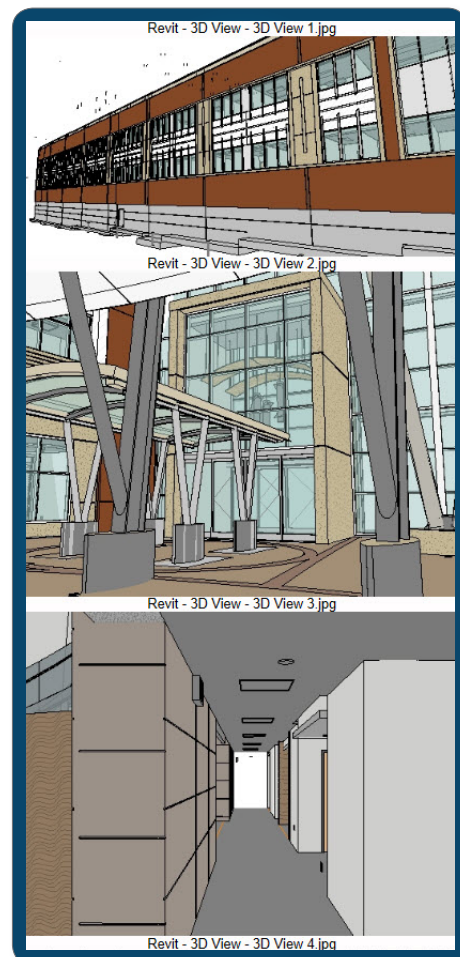
“We used to ask for check sets from each discipline once or twice a week for project management,” said Holloway. “Now we get the equivalent and more every day and no one has to lift a finger.” This provides an unprecedented level of project oversight from everyone involved and RLF can identify problems and areas of overlap or opportunity daily instead of weekly. In the end, this ability to “see into the project” allows them to create better projects more quickly and with higher accuracy.

### Leveraging Output Formats for Value Add Programs

“We’re researching the possibility of exporting DWG or DWF at end of the project and we have been looking at different ways of creating of markups and revisions in the model,” said Holloway. “We are now looking at how we can leverage the new gbXML and IFC export features. Ideally we want to tie our model into Autodesk Green Building Studio to conduct energy analyses on our designs, which is a huge value-add for us without a massive file conversion effort.”

RLF and other firms asked IMAGINiT if they could package the features they wanted without the Revit Server requirement. IMAGINiT’s software development team responded to the demand by developing Clarity Workshare. With Clarity Workshare, architectural, engineering and construction firms that are not using Autodesk Revit Server, can still improve their traditional file-based work sharing approach and fully automate Revit-based tasks.

“Clarity Workshare is a dream come true for BIM Coordinators,” said Damian Serrano, Assoc. AIA, BIM Coordinator, RLF. “The ability to expose rich data in the model and use it for creating customized reports helps us make better informed design decisions in a fraction of the time it would have taken before. In addition, the



## Improving Project Transparency for Clients

“Even marketing has now gotten their hand in the mix to see how they can use Clarity Workshare for clients to show them what going on with their projects as a selling feature and for improved client service,” said Holloway. In future, through the Clarity Web portal, RLF hopes to provide direct access to model information for owners as the project proceeds. “We can improve transparency by inviting the client right into the model for viewing anytime.”

## About IMAGINiT Technologies

IMAGINiT Technologies ([imaginit.com](http://imaginit.com)), a division of Rand Worldwide, advances the way architects and engineers design, develop, and manage projects. Customers of this leading professional services and technology company include organizations in the building, infrastructure, manufacturing and facilities management industries. Fortune 500 and *Engineering News Record's* Top 100 organizations work with IMAGINiT Technologies to gain competitive advantages through expert technology consulting, implementation, training, and support services. As one of the world's largest integrators of Autodesk 3D design and engineering software, the team leverages unrivalled industry experience to design systems that accelerate innovation while improving project quality and profitability. For more information visit [imaginit.com](http://imaginit.com) or [rand.com](http://rand.com).

*Any and all trademarks making reference to or related to Rand Worldwide, IMAGINiT Technologies, ASCENT, Rand Secure Archive, or IMAGINiT Clarity, are registered and/or owned by Rand Worldwide, Inc., and/or its subsidiaries, affiliates, and/or other legal holders.*

*Autodesk is a registered trademark of Autodesk, Inc., in the USA and/or other countries. All other brand names, product names, or trademarks belong to their respective holders.*

### US/CANADA



800-356-9050

### AUSTRALIA



1300-66-7263

### MALAYSIA



603-8994-9951

### SINGAPORE



65-6226-0880



[imaginit.com](http://imaginit.com)

**IMAGINiT**  
TECHNOLOGIES  
A RAND Worldwide Company