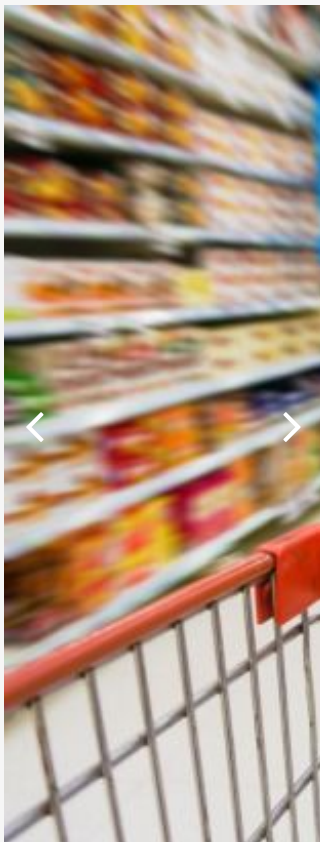


[Home](#) > One of the largest French international retail group

Retail, Distribution & CPG



One of the largest French international retail group

> General Presentation

A French international retail group and multinational corporation headquartered in Croix, France.

In 2014 it chose to upgrade its ERP and develop a CORE MODEL on Oracle E Business Suite R12.2.4.

Belgium and Luxembourg were used as test countries for the first roll outs

The project is still on going with the roll outs of other countries planned.

Spoon Consulting was responsible for:

- Development of all CEMLIIs on AP, AR, FA, HR, AGIS, GL, CM
- Development of Data Migration Tools
- Testing of RUNs for Data Migration for Belgium and Luxembourg
- Onsite Presence during Design, Integration Test and Data Migration
- Using FAH to integrate external data in OeBS R12

> Key Figures

1800 men days

Offshore team :

1 Delivery Manager

2 Track leaders

12 Functional and technical consultants





> Contact Info

> Spoon Consulting Ltd

The Factory Building,
Vivéa Business Park,
Saint Pierre 81430,
Moka

+230 433 34 77

contact@spoonconsulting.com

> Salesforce

Mrs Nivedita JOKHUN

nivedita.jokhun@spoonconsulting.com

> Sage & BI

Mr Asvin JHEENGUT

asvin.jheengut@spoonconsulting.com

> Oracle

Mr Vimal DOOLHUR

vimal.doolhur@spoonconsulting.com

> Recruitment & Communication

Mrs Zulaika SUNTHBOCUS

zulaika.sunthbocus@spoonconsulting.com

> PostgreSQL

Mr Vimal DOOLHUR

vimal.doolhur@spoonconsulting.com